



# **FITTING INSTRUCTIONS**

## **31BF**

Thank you for purchasing a set of bushes for your DEW platform-based vehicle. The following instructions will help you fit these bushes correctly to ensure optimal performance.

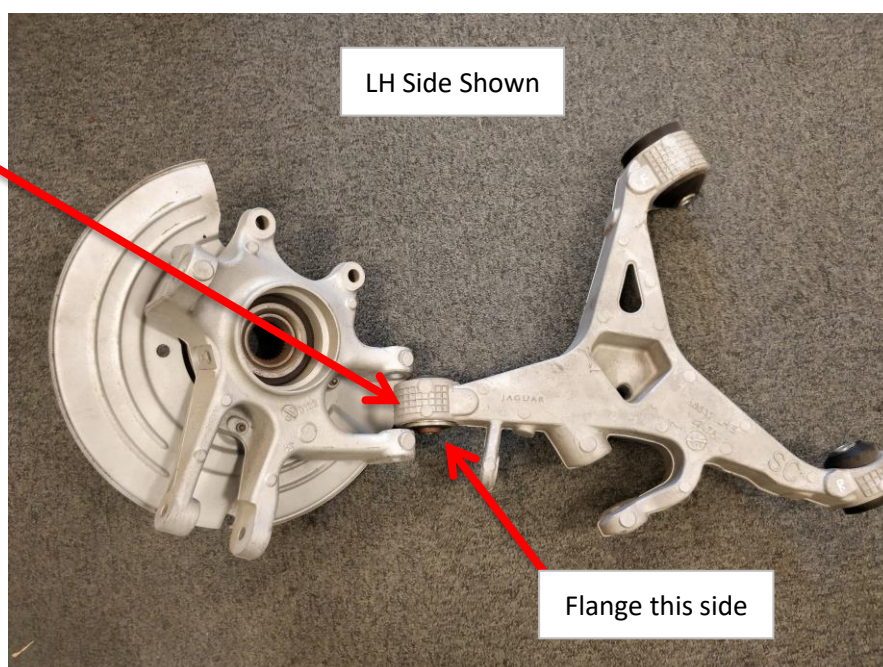
The bags contain 2x 31BF and 4x 1L washers.

There are two possible sizes of bush application - 54mm & 59mm.

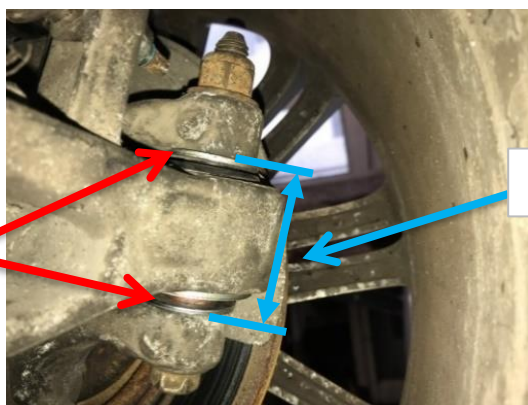
The x4 1L washers supplied are to accommodate the 59mm application only.

The washers are not required on a 54mm setup.

31BF - Pushed in from the rear of the vehicle to the front.



x2 1L washers to be fitted either side of 31BF Polybush to both sides of the vehicle where there is 59mm gap between the brackets.



59mm Width

If you have any questions regarding the fitment of these bushes, please give us a ring on 01978664316 or send us an e-mail on [sales@polybush.co.uk](mailto:sales@polybush.co.uk).