

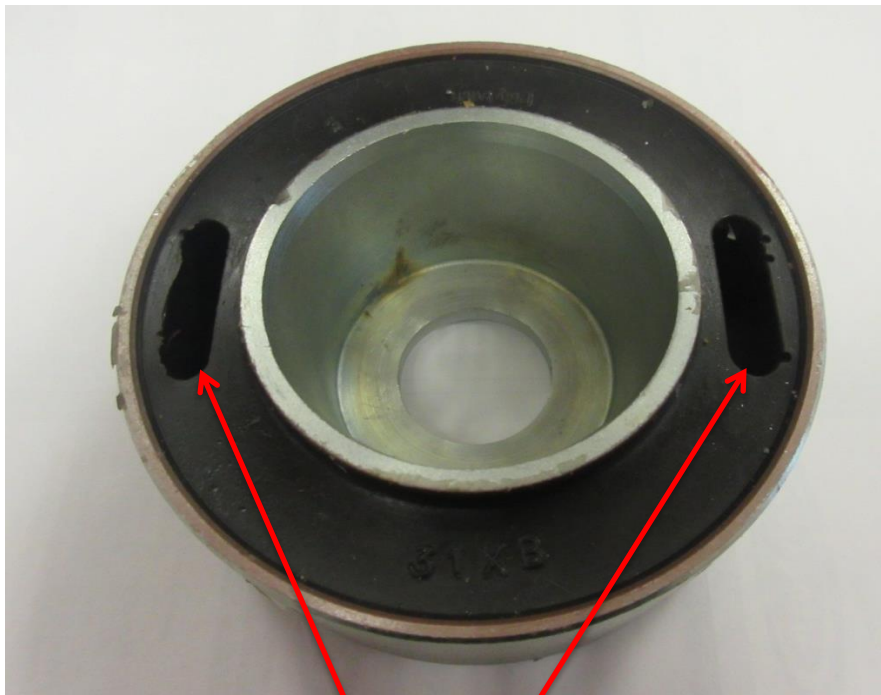


## FITTING INSTRUCTIONS

### 31XB

Thank you for purchasing a set of bushes for your Jaguar with a rear independent suspension. The following instructions will help you fitting these bushes correctly to ensure optimal performance.

The bag for 31XB contains 2x 31XB castings.



This is the top side of the bush.  
The voids on the bush should be facing the front and the rear of the vehicle.

If you have any questions regarding the fitment of these bushes, please give us a ring on 01978664316 or send us an e-mail on [sales@polybush.co.uk](mailto:sales@polybush.co.uk).

