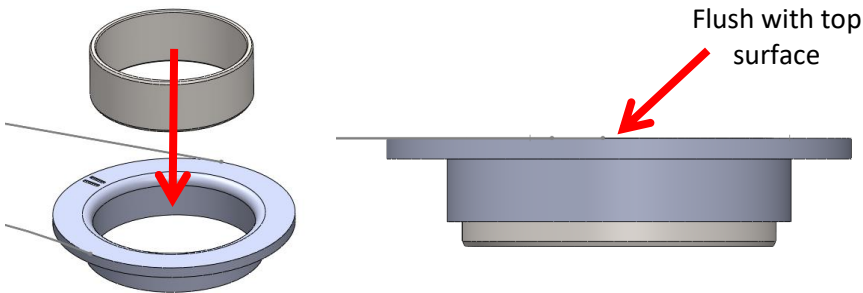


FITTING INSTRUCTIONS

44EX - Front Wishbone Rear Bush

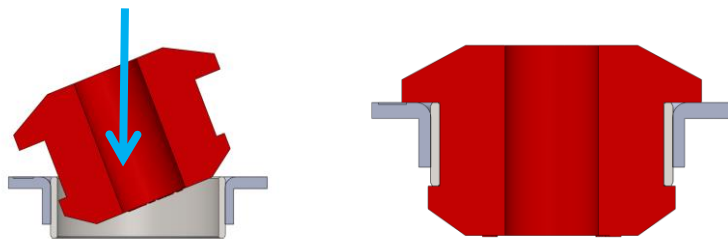
This bush fits multiple VAG models	OEM Part Numbers	1K0-407-183-P
		5Q0-407-183

- Step 1 Press out existing OEM bush including the outer metal shell. Ensure no sharp edges are left on the bore.
- Step 2 Press the Polybush outer metal shell into the bore from the top of the wishbone (radiused side) until flush with the top side of the wishbone.

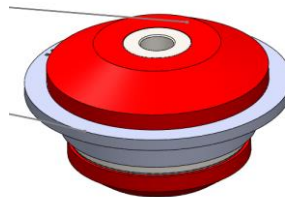


Note: Depending on which VAG model the metal shell will sit lower in one than the other.

- Step 3 Apply washing up liquid or similar to the leading edge flange, bore of the bush and the outer metal.
- Step 4 Insert the bush into the housing at a slight angle and push until the flange appears on the underside.



- Step 5 Insert tube until flush.



- Step 6 Refit wishbone into the subframe bracketry and tighten to OE torque specifications.

