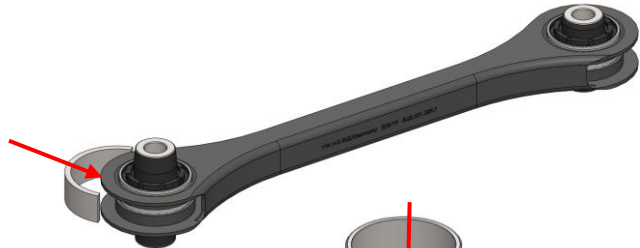




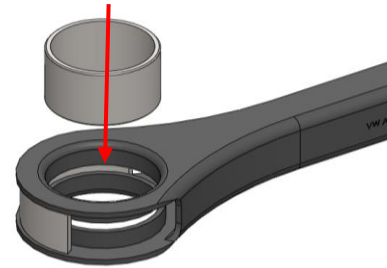
**FITTING INSTRUCTIONS**

44FA / 44FB - Rear Toe Arm Inner & Outer Bushes	
44FA Contains	44FB Contains
2 x 44FA Bushes	2 x 44FB Bushes
2 x 44FA Inner Tubes	2 x 44FB Inner Tubes
2 x 44FA Outer Tubes	2 x 44FA Outer Tubes
1 x Installation/Removal Tool	1 x Installation/Removal Tool

Step 1: Using the provided removal/installation tools, press out the OE bush. **NOTE:** Ensure the removal tools are seated. Incorrect placement may cause damage.



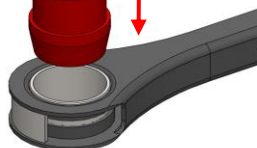
Step 2: With the installation tool in place, press the 44FA outer shell in until flush with both sides.



Step 3: Apply washing-up liquid to one of the bushes leading edges and outer metal bore.



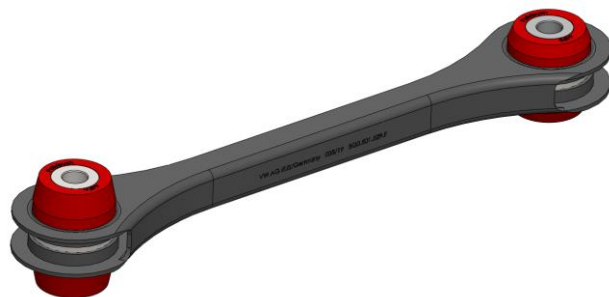
Step 4: Insert the bush in the direction shown, until fully seated. Once complete, insert the inner tube.



Step 5: Remove the Installation tool

Step 6: Re-do Steps 1-5 for 44FB Outer Bush

Step 7: Refit the arm to the car and tighten to OE torque specifications at ride height. **NOTE:** Ensure suspension is settled, prior to final torque.



If you have any questions regarding the fitment of these bushes, please give us a ring on 01978 664316.

or send an e-mail to [sales@polybush.co.uk](mailto:sales@polybush.co.uk).