



# Polybush®

Revolutionise Your Ride

## LCV

### Product Range



[www.polybush.co.uk](http://www.polybush.co.uk)

# LCV

## Contents

O.E number is for reference only

### **FIAT**

Fiat Ducato 1

### **FORD**

Ford Transit V184/185 2000-2006 2

Ford Transit Custom 2014 onwards 2

Ford Transit V347/348 2006-2014 4

### **ISUZU**

Isuzu D Max TFR, TFS (2012-2017) 5

### **IVECO**

Iveco Daily III, IV and V 6

Iveco Eurocargp 75.15 6

### **MERCEDES**

Mercedes Sprinter 1995-2006 7

Mercedes Sprinter 2006-2014 8

### **PEUGEOT**

Peugeot Boxer Also: Citroen Relay/Fiat Ducato 9

Peugeot Partner 9

### **VAUXHALL**

Vauxhall Combo (2005-2012) 10






### **VOLKSWAGEN**

VW Crafter 35 and 50 2006 onwards 10

VW LT II 1995-2006 11

# FIAT

## Fiat Ducato

Type	Code	Description	OE No	Bushes
	4AW	Rear Spring-eye Bush - 4 Tonne High Roof	Part of: 1355467080	1
	4BC	Front Anti Roll Bar Bush c/w Bracket	Part of: 1393871080	1
	4BD	Rear Leaf Spring Rear Bush	1304640080	1
	4BK	Front Wishbone Rear Bush	1352228080 52228080S2	1
	4BN	Rear Spring Bush	1350009080	1

## Case Study: Fiat Ducato

Produced for West Midlands Ambulance Service

### Issue:

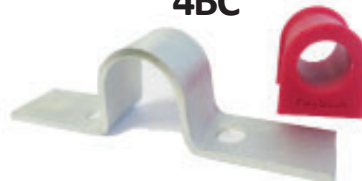
Premature bush wear, bushes cannot be purchased separately so replacing the full anti roll bar and spring on a regular basis, causing high downtime and increased workshop costs.

### 4AW



£58.62 for 2 bushes  
O.E. Leaf Spring: £500

### 4BC










£48.72 for 2 bushes  
O.E. Anti Roll bar: £320

### Polybush Solutions



- The 4AW and 4BC replace the parts which are only available by purchasing full leaf spring and anti roll bar.
- Polybush provided a cost effective solution keeping the vehicles on the road .
- Cost saving of over £800 on parts alone.

# FORD

## Ford Transit V184/185 2000-2006

Type	Code	Description	OE No	Bushes
	40BA	Rear Anti Roll Bar Bush 29mm	4041490	2
	40BB	Front Anti Roll Bar Bush 24mm	4041489	2
	40CB	Front Anti Roll Bar Bush 20mm	1748361 4671720	2
	40BC	Front Wishbone Rear Bush	4540787	2
	40BD	Front Wishbone Front Bush	4131788	2
	40BV	Rear Leaf Spring Front Bush	4055743	2
	40BW	Rear Leaf Spring Rear Bushes	4041521	2

## Ford Transit Custom 2014-On

Type	Code	Description	OE No	Bushes
	40BC	Front Wishbone Rear Bush	4540787	2
	40BD	Front Wishbone Front Bush	4131788	2

# Case Study: Ford Transit

## The issue:

Front wishbone rear bushes suffer prematurely from compression set due to the O.E. bushes not being suitable for the vehicle's weight.

## Polybush's solution:

- The 40BC replaces the front wishbone rear bush .
- Polybushes do not suffer from compression set.
- Lasts 4-5 times longer than the O.E. part.
- Designed to be easily fitted by hand, reducing workshop time allowing for a quick turn around.

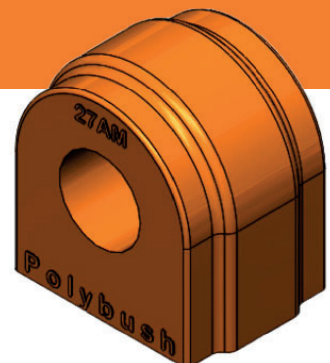
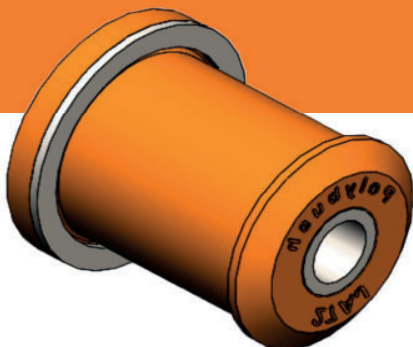
Full bush sets are available, covering all models and conversions of Transits, from 2000 to 2014, including anti roll bar and spring bushes.

40BC













## Fitting Polybush

Polybushes are fitted using standard workshop tools and equipment. Our bushes are designed to fit in the same way as original equipment bushes. Due to our interference fit no grease is needed, leaving you with a real fit and forget solution for all of your vehicle's needs.



# FORD

## Ford Transit V347/348 2006-2014

Type	Code	Description	OE No	Bushes
	40BA	Rear Anti Roll Bar Bush 29mm	4041490	2
	40BB	Front Anti Roll Bar Bush 24mm	4041489	2
	40CA	Rear Leaf Spring Front Bush	1431075 1720481	2
	40CB	Front Anti Roll Bar Bush 20mm	1748361 4671720	2
	40BD	Front Wishbone Front Bush	4131788	2
	40BW	Rear Leaf Spring Rear Bush	4041521	2
	40AR	Front Wishbone Front Bush 14mm Bolt	1477858	2
	40AY	Front Wishbone Rear Bush	1495717	2
	40BX	Rear Leaf Spring Rear Bush	4367044	2
	40BY	Rear Leaf Spring Front Bush	4367046	2



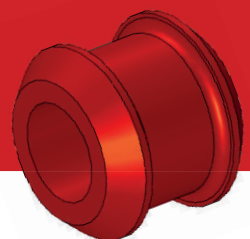
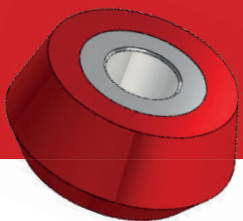
# ISUZU

## Isuzu D-Max TFR, TFS (2012-2017)

Type	Code	Description	OE No	Bushes
	KIT 201	49A, 49B, 49D, 49E, 49F	see below	18
	49A	Front Upper Arm Inner Bush	89736-41473	4
	49B	Front Lower Arm Inner Bush	89794-70871	4
	49D	Rear Leaf Spring Front Bush	89423-43190	2
	49E	Rear Leaf Spring Rear Bush	89735-74920	4
	49F	Rear Leaf Spring Upper Shackle Bush	89794-65450	4
	49C	Front Shock Absorber Lower Bush	89794- 70973	2
	49G	Rear Shock Absorber Bush	89794- 70162	2










### What are the benefits of Polybush?

Polybushes last 4-5 times longer than the original rubber O.E. bushes, reducing vehicle downtime and workshop costs. Polybushes correct your vehicle's suspension alignment increasing your tyre life and reducing MOT costs.





# IVECO

## Iveco Daily III , IV , V and VI

Type	Code	Description	OE No	Bushes
	Kit 176	Iveco Daily wishbone and Spring bushes		12
	Kit 196	Iveco Daily Wishbone, Spring and Shackle Bush Kit		14
	4AX	Front Wishbone Bush	504039506	1
	4AY	Spring and Shackle Bush	504112265	1
	4BH	Rear Anti Roll Bar Bush 22mm	93801556	1
	4CA	Iveco Daily Mk6 Front Upper Bush	5801564281	1
	4CB	Iveco Daily Mk6 Leaf Spring Front Bush	5801623270	1
	4CC	Iveco Daily Mk6 Leaf Spring Rear Bush	5801523765	1
	4CD	Iveco Daily Mk6 Leaf Spring Hanger	5801552156	1

## Iveco Eurocargo 75.15

Type	Code	Description	OE No	Bushes
	4E	Spring Bush	98482540	1
	4W	Anti Roll Bar Link Bush	8127423	1



# MERCEDES

## Mercedes Sprinter 1995-2006

Type	Code	Description	OE No	Bushes
	2AE	Rear Anti Roll Bar Link Bush	601 321 0350	1
	2XA	Small Anti Roll Bar Link Bush (30mm)	309 320 0073	1
	2XK	Large Anti Roll Bar Link Bush (36mm)	667 320 0073	1
	2AF	Front Anti Roll Bar Bush 25mm	904 323 0085	1
	2XH	Front Anti Roll Bar Bush 22mm	901 323 0185	1
	2AH	Rear Anti Roll Bar Bush 22mm	901 326 0081	1
	2XB	Rear Anti Roll Bar Bush 33mm	904 326 0981	1
	2AK	Rear Anti Roll Bar Clamp 30mm	904 326 0981	1
	2AG	Front Anti Roll Bar Link Bush	901 323 0285	1
	2XP	Rear Anti Roll Bar Bush 27mm	904 326 0881 2DO511413B	1

# MERCEDES






## Mercedes Sprinter 2006-2014

Type	Code	Description	OE No	Bushes
	2AE	Rear Anti Roll Bar Link	601 321 0350	1
	<b>Applications:</b> 2t -4t vehicles only			
	2XK	Large Anti Roll Bar Link Bush 36mm	667 320 0073	1
	<b>Applications:</b> 4.6 and 5t vehicles only			
	2AL	Front Anti Roll Bar bush 06-on-wards	906 323 1685	1
<b>Applications:</b> 3.5t to 5t only				
	2AM	Rear Anti Roll Bar Bush 15mm	906 326 0781	1
<b>Applications:</b> 3.5t only				
	2AK	Rear Anti Roll Bar Bush 30mm	906 326 0981	1
<b>Applications:</b> 4.6 & 5t only				
	2XB	Rear Anti Roll Bar Bush 33mm	904 326 1081	1
<b>Applications:</b> 3.5t				
	2XN	Rear Anti Roll Bar Bush 33mm	904 326 0481	1
<b>Applications:</b> 4.6t & 5t only				
	2XO	Rear Anti Roll Bar Bush 41mm	667 326 1381	1
<b>Applications:</b> 5t (2001-2006) only				

# PEUGEOT

## Peugeot Boxer

Also: Citroen Relay/Fiat Ducato


Type	Code	Description	OE No	Bushes
	4AW	Rear Spring-eye Bush - 4 Tonne High Roof	Part of: 1355467080	1
	4BC	Front Anti Roll Bar Bush c/w Bracket	Part of: 1393871080	1
	4BD	Rear Leaf Spring Rear Bush	1304640080	1
	4BK	Front Wishbone Rear Bush	1352228080 52228080S2	1
	4BN	Rear Spring Bush	1350009080	1

## Peugeot Partner

Type	Code	Description	OE No	Bushes
	39L	Front Lower Arm Front Bush	Part of L26/15OR	1
	39M	Front Lower Arm Rear Bush	Part of L26/15OR	1
	39N	Anti Roll Bar Bush 24.5mm	5094000000	2
	39P	Anti Roll Bar Clamp 25mm	5094000000	2
	39R	Anti Roll Bar Clamp 24mm	5094000000	2

# VAUXHALL

## Vauxhall Combo (2005-2012)

Type	Code	Description	OE No	Bushes
	47A	Front Wishbone Rear Bush	352310	1
			13138151	
			244301103	

# VOLKSWAGEN

## VW Crafter 35 and 50 (2006 onwards)

Type	Code	Description	OE No	Bushes
     	2AE	Rear Anti Roll Bar Link Bush	601 321 0350	1
	2AL	Front Anti Roll Bar Bush	906 323 1685	1
	2AM	Rear Anti Roll Bar Bush 15mm	906 326 0781	1
	2XM	Rear Anti Roll Bar Bush 35mm	2E0 511 413L 906 326 2681	1
	Applications: 50 only (2.5 TDI)			
	2XN	Rear Anti Roll Bar Bush 33mm	906 326 0481	1
	Applications: 35 (bus only) & 50			
	2AK	Rear Anti Roll Bar Bush 30mm	904 326 0981	1
	Applications: 50 only			

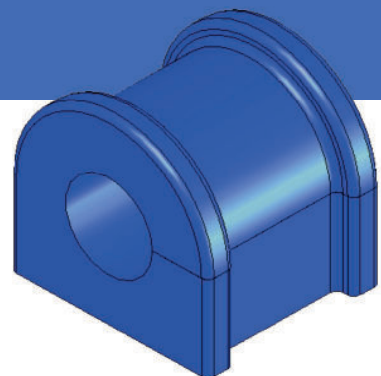
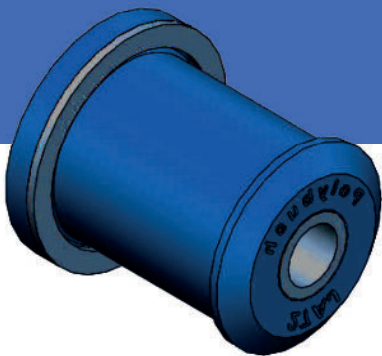
# VOLKSWAGEN

## VW LT II 1995-2006

Type	Code	Description	OE No	Bushes
	2AE	Rear Anti Roll Bar Link Bush	601 321 0350	1
	2AF	Front Anti Roll Bar Bush 25mm	904 323 0085	1
	2AH	Rear Anti Roll Bar Bush 22mm	901 326 0081	1
	2XB	Rear Anti Roll Bar Bush 33mm	904 326 1081	1

### Why do they last longer?

Polybushes are not affected by oil, fuel & road contaminants and are extremely resistant to abrasion. Polybushes also do not suffer from compression set.



## About Polybush

Our design and development team ensure all Polybush products continue to meet the ever-changing demands of the automotive market. Polybushes are designed and manufactured to meet their exact specification, keeping the suspension working just as the manufacturer intended. Polybushes use only high quality pure materials which offer immense flexibility and resilience, restoring the original ride comfort with the durability of Polyurethane.

### Key features and benefits to fitting Polybush:

- Easy to fit- the original fit and forget
- Less Downtime- Keeping your vehicles on the road
- Reduced MOT Costs
- Lasts 4-5 times longer than original rubber bushes
- Controlled suspension movement
- Impressive & confident ride
- Prolonged tyre life
- Unaffected by oil, fuel and road contaminants
- Fixes premature bush failures
- No requirement for specialist tools





## **The History**

Polybush have been designing and manufacturing polyurethane suspension components since 1992 and continue to expand their product range with the assistance of new high tech investments and vigorous research and testing. Polybush is located in North Wales in what is now one of the largest industrial areas in Europe, the Wrexham Industrial Estate.

## **The Range**

Polybush manufacturer for various markets, not just the LCV range. Due to Polybush's vast knowledge in both the automotive and Polyurethane manufacturing process, We are able to produce a variety of high quality products whatever your application.

**Have a unique project you need help with?  
Get in touch with the Polybush team!**





# Polybush®

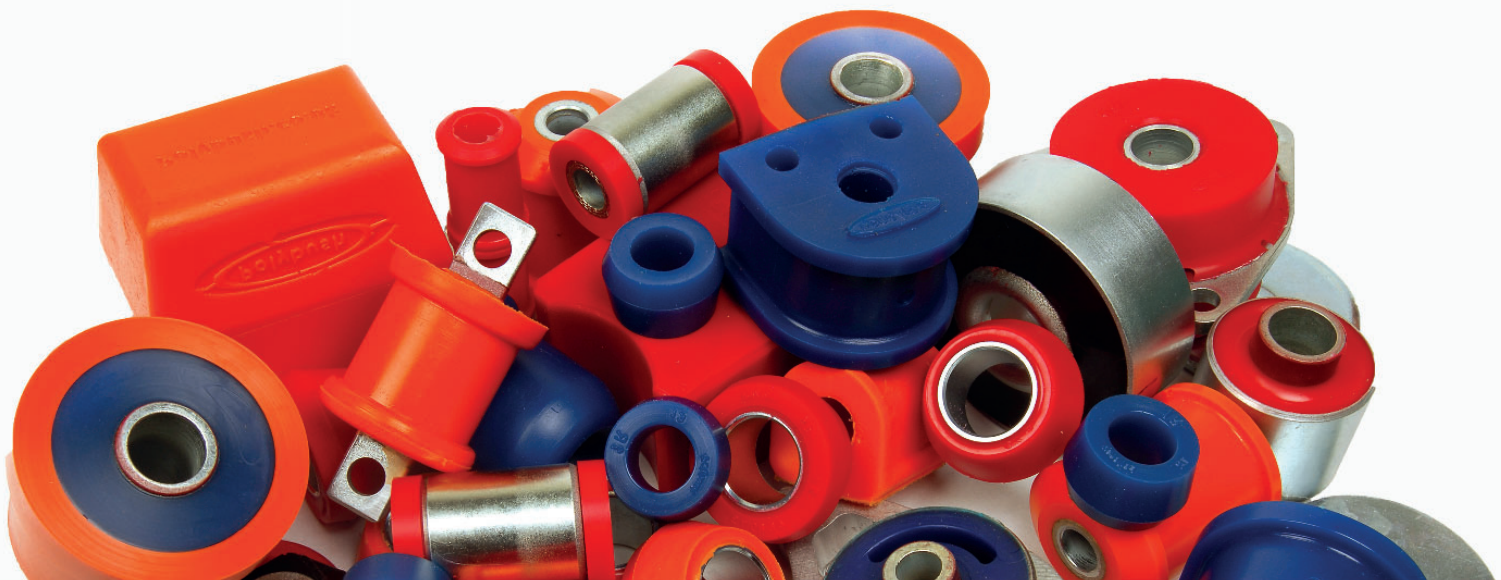
Revolutionise Your Ride

Want to get in touch?

**Polybush**

Clywedog Road South  
Wrexham Industrial Estate  
Wrexham LL13 9XS

Tel: 01978 664316 Email: [Sales@polybush.co.uk](mailto:Sales@polybush.co.uk)



[www.polybush.co.uk](http://www.polybush.co.uk)