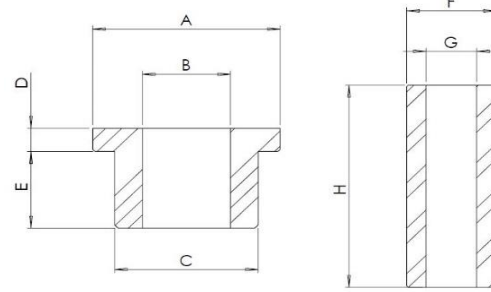




Top Hat Bushes & Tubes

Top Hat Dimensions (Dim C - Smallest to Largest)



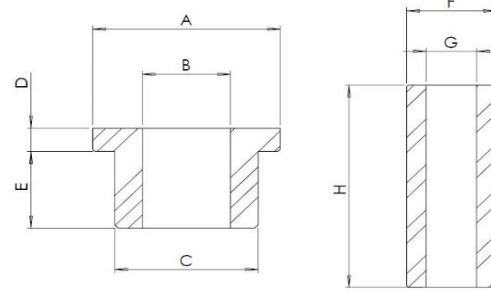
Tube Dimensions

Part No	A Flange O/D	B Bore I/D	C Barrel O/D	D Flange Thickness	E Barrel Length	F Tube O/D	G Tube Bore	H Tube Length	No. of Top Hats in Partset	No. of Tubes in Partset	Retail Price per Partset
38-3-	22	7.9	12.8	15	1.5				8	0	£52.57
40-4-16	28.8	8	14.4	2.5	16.5				4	0	£20.54
26-8-	29	8.5	15.4	17.3	2.4					0	Please Call
3-24-13	26.2	11.2	15.7	15	3				4	0	£23.62
54-18-	26	12.1	15.84	2.15	4.65					0	Please Call
40-3-4	20	11	16.2	2.6	4.6					0	Please Call
54-7-	38.5	11.9	18.2	14.6	1.6					0	Please Call
4-3-22	43.6	11.6	18.5	19	3.5					0	Please Call
3-1-24	22	10.5	19	4.4	12.3				1	0	£5.75
25-3-	31.6	12.5	19	13.8	1.8				4	0	£42.05
40-3-5	24	11	19.2	2.4	5.3					0	Please Call
3-1-23	23	12.4	19.5	1.75	5.75				2	0	£35.59
40-7-	27	11	20.7	8	26.25				4	0	£23.78
40-20-	27	12.6	20.7	8	26.25				4	0	£23.78
53-1-	31.5	15.7	21.2	6.6	27.9	15.88	10.1	71	4	4	£119.84
53-2-	31.5	15.7	21.2	6.6	27.9	15.88	10.1	73.96	8	8	£196.46
53-3-	31.5	15.7	21.2	6.6	27.9	15.88	10.1	115.1	2	2	£83.27
53-4-	31.5	15.7	21.2	6.6	27.9	15.88	10.1	89.7	2	2	£82.46
3-21-	47.4	15	21.4	10	4				1	0	£3.79
3-4-	25.4	12.4	21.5	9.3	22				8	0	£43.16
3-24-18	24.7	12.5	21.5	4	21.5					0	Please Call
3-24-2	25	12.4	21.6	8.5	19				4	0	£28.53
3-24-3	27	12.7	22	3.6	11.9				4	0	£21.66
9-1-7	50	19	22	2.75	2.9				6	0	£74.01
53-5-	25.7	15.9	22	16	9				4	4	£39.88
53-7-	25.7	15.9	22	16	9				2	2	£28.28
53-12-	32	15.8	22.1	2.95	11.85				2	2	£43.86
53-13-	32	15.8	22.1	5.7	11.85				2	2	£45.11
34-13-	25.25	12.6	22.15	8	26.25				8	0	£44.94
3-1-11	28	12.6	22.5	6	23				8	0	£66.38
53-6-	29.9	18.9	23	18.15	20				2	2	£49.82
3-10-	28.6	15.7	25.3	6.2	24.25				1	0	£6.34
4-3-8	31.75	13.79	25.35	4.25	19.5					1	Please Call
54-5-	35	18.7	25.4	3	24.6					0	Please Call
54-6-	36	12.3	25.4	7.1	24.5					0	Please Call
4-3-18	32	13.79	25.45	4.5	26.5	14.3	8.1	64	1	1	£14.40
4-3-19	32	13.79	25.45	8.5	26.5	14.3	8.1	72	1	1	£14.36
40-3-3	35	14.5	25.5	9	39.5					0	Please Call
40-3-6	35	12.8	25.5	9	39					0	£31.56
44-3-12	30	14.5	25.5	5	10					0	Please Call
44-3-24	30	14.5	25.5	5	10	15	8.1	33	4	4	£62.44



Top Hat Bushes & Tubes

Top Hat Dimensions (Dim C - Smallest to Largest)



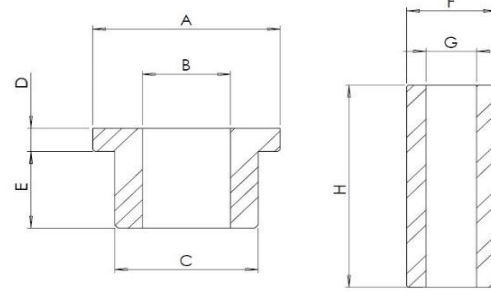
Tube Dimensions

Part No	A Flange O/D	B Bore I/D	C Barrel O/D	D Flange Thickness	E Barrel Length	F Tube O/D	G Tube Bore	H Tube Length	No. of Top Hats in Partset	No. of Tubes in Partset	Retail Price per Partset
3-1-7	31	15.8	25.6	2.5	23.7	16	11.2	54	2	2	£50.36
25-10-	28	14.1	25.6	4	11.5	14.3	9.6	32	2	2	£44.42
26-3-	32	15.7	25.7	3	21	16	11.2	50.8	1	1	£16.75
30-8-	38	15.9	26	5	20	16	12.1	50.8	2	2	£32.71
35-5-	51.5	15.1	26.75	28	6.5				2	0	£17.35
12-1-8	32.8	16.5	26.8	4.6	18	17	12.1	47.7	2	2	£51.02
1-5-	33	18.6	27.3	4.9	15.8	19	12.8	44.5	2	2	£24.59
26-4-	38	17.3	27.3	2.5	14	17.5	12.8	35	1	1	£23.75
3-1-16	36	15.5	27.5	3.5	19	16	12.8	44.5	1	1	£29.46
17-1-4	37	16.2	27.6	8	37.5				4	0	£23.86
17-1-5	38	16.2	27.6	8	46.5				4	0	£23.86
4-2-17	38	17.5	28	6	16					0	Please Call
6-1-8	38	17.5	28	5	15					0	Please Call
44-4-	38	17.5	28	6	16.5	18	10.1	47	2	2	£51.12
40-3-7	37.99	18.55	28.19	3.7	19.1	19.15	15.68	43.44		1	Please Call
4-2-18	34.5	15.5	28.5	8	12					0	Please Call
25-4-	34	15.7	28.5	7.5	9.5				4	0	£42.05
9-1-16	35	20.5	28.6	2.9	14.75	20.64	14.3	36	1	1	£20.21
3-8-	31	17.3	28.7	5.9	19.9				1	0	£6.34
31-1-10	34.5	15.8	28.7	8	12.2	16	8	41.3	3	3	£44.99
4-2-12	35	19	28.9	4	14.6					0	Please Call
44-1-13	35	15.2	28.9	5.25	9.75	15.9	10.4	30	4	2	£50.85
25-7-	31.5	15.8	29.3	7.8	16.2				4	0	£26.65
1-12-	36	19.5	29.7	2.5	31.5	20	14.4	70	2	2	£22.55
1-4-	36	18.9	29.8	3	17.4	20	14.1	44.5	2	2	£24.59
1-24-26	36	19.5	29.9	5.5	30	20	14.4	70	8	8	£83.20
7-1-	35	18	30	6	31					0	Please Call
7-3-	35	18	30	6	50					0	Please Call
22-3-	36	12.5	30	5	25				8	0	£49.53
40-25-	40	15.7	30	7.6	17.25	16	10.1	51	2	2	£49.81
44-7-	40	19.7	30	7	20	20	12.1	54	4	4	£90.45
27-18-	36	19.9	30.2	8.5	14.5	20	12.1	47.7	2	2	£41.62
32-8-	38	25.9	30.2	3.7	70.3					0	Please Call
40-2-13	37	19.5	30.2	7	20	20	12.1	54	2	2	£42.71
4-2-1	38	20	30.25	3.2	14.8				1	0	£21.96
8-10-	36.25	20.2	30.25	1.9	21.65	20.64	14.3	48	1	1	£18.42
24-8-	40.6	18.8	30.3	4.9	12.7	19.05	12.1	35	2	2	£36.41
32-5-	35	19.8	30.3	3.25	21.9	20	14.4	50.8	2	2	£46.48
49-6-	35.75	18.25	30.3	5	45.5				4	0	£30.43
49-5-	36	18.2	30.4	5	29.5				4	0	£29.73
6-1-3	40	20	30.5	6	16.5	20	12.1	45	1	1	£12.43



Top Hat Bushes & Tubes

Top Hat Dimensions (Dim C - Smallest to Largest)



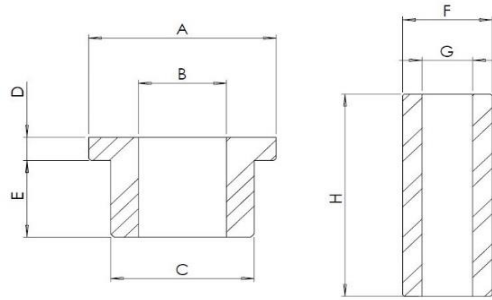
Tube Dimensions

Part No	A Flange O/D	B Bore I/D	C Barrel O/D	D Flange Thickness	E Barrel Length	F Tube O/D	G Tube Bore	H Tube Length	No. of Top Hats in Partset	No. of Tubes in Partset	Retail Price per Partset
44-1-	40	19.75	30.5	7	19	20	12.1	61	2	2	£54.18
44-2-	40	19.75	30.5	7	19	22	12.1	54	2	2	£50.66
54-11-	50	24.5	30.5	22	5					0	Please Call
7-16-	38	19.7	30.7	6.4	19.5	20	12.1	53	2	2	£42.63
1-22-	57.3	16	31.1	18.7	4.7				2	0	£19.38
7-22-	40	19.6	31.1	4.4	15	20	12.1	40	2	2	£42.05
7-1-22	38	19.8	31.1	5.75	21.5	20	12.1	56	2	2	£51.70
4-2-	37	21.8	31.25	4	15				1	0	£14.92
6-23-	39.7	19.7	31.4	9.4	34.6					0	Please Call
2-1-10	37.2	20.2	31.5	3.7	14.4	20.2	12.1	39	1	1	£19.74
8-1-	39.4	19.5	31.8	3.3	28.7	20	14.3	57	1	1	£16.86
8-11-	42	20.2	31.8	10	18.25	20	14.3	57	1	1	£16.86
45-24-	40	15.4	31.8	2	13	15.9	10.4	26	2	2	£40.02
8-2-	37.83	20.2	31.87	2.36	27.89	20	14.3	62	1	1	£21.03
16-3-	37	21.8	31.9	2	13.25	22.2	16.1	29	1	1	£13.90
39-11-	40	19.5	32	5	11	20	14.2	34		1	Please Call
44-4-8	40	19.5	32	7	22	20	14.1	60	2	2	£44.68
27-26-	42	19.5	32.2	6.3	17	20	12.1	47.7	2	2	£48.24
12-1-5	42.6	16.5	32.6	6.8	17.5	17	12.1	49.8	1	1	£22.24
12-1-7	38.6	21.5	32.6	5	13.4	22	17.3	37.8	1	1	£20.97
40-4-8	42	21.9	32.8	8.5	44.5	22	14.1	107	2	2	£38.24
1-3-14	38	20	33	4	29	20	14.4	70	2	2	£30.06
39-6-	55	19.8	33	10	35	20	12.1	43.4	4	4	£71.12
7-1-20	40	20.8	33.2	7.75	21.5	20	14.1	60	2	2	£30.47
7-1-26	44	19.8	33.2	6.5	19.6	20	12.1	54	4	4	£63.05
7-1-13	38	22	33.3	3.5	10.8	22.2	14.1	32.6	2	2	£43.51
7-20-	42	21.9	34.2	2.9	15.5	22.2	12.1	38	2	2	£37.39
7-21-	42	21.9	34.2	4.7	14	22.2	12.1	38	2	2	£37.39
42-13-	50	19.9	34.2	7	19.5				4	0	£84.76
1-4-14	48	19.5	34.5	8.6	12.9	20	12.1	43	1	1	£16.15
36-25-	41	19.9	34.5	5	15.5	22	12.4	42	2	2	£52.27
3-1-8	40	15.8	34.6	4.8	21.8	16	11.2	54	2	2	£50.36
1-3-	40	19.3	34.8	2	29	20	16.1	62	2	2	£30.06
24-16-	41	19.5	34.8	7	19.5	20	12.1	54	2	2	£49.80
3-24-4	41	15.8	34.9	5	22	16	11.2	54	2	2	£27.83
7-4-	44.3	17.5	34.9	8.6	35.8					0	Please Call
17-1-10	45	21.9	34.9	7.5	21.5	22.2	14.2	59.8	2	2	£53.53
3-1-17	38	22.4	35	8	17.85				1	0	£4.91
16-8-	41	19.7	35	6.5	25	20	16.1	37	1	10	£17.32
3-1-10	43.2	15.8	35.1	2.1	24	16	11.2	54	2	2	£50.36
7-1-25	50	19.8	35.1	16.75	27	20	12.1	43	4	4	£81.16



Top Hat Bushes & Tubes

Top Hat Dimensions (Dim C - Smallest to Largest)



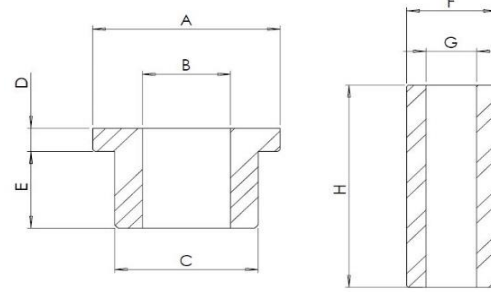
Tube Dimensions

Part No	A Flange O/D	B Bore I/D	C Barrel O/D	D Flange Thickness	E Barrel Length	F Tube O/D	G Tube Bore	H Tube Length	No. of Top Hats in Partset	No. of Tubes in Partset	Retail Price per Partset
1-16-	50	22	35.2	27.3	14.2				2	0	£25.96
7-1-18	42	21.8	35.2	5.75	14.5	22	14.1	43	8	8	£184.62
41-1-	44	19.8	35.3	11.5	35.5	20	12.1	47.7	4	4	£64.29
54-8-	45	18.75	35.4	6	24.5					0	Please Call
12-26-	38	16.5	35.5	7.2	17	17	12.1	49.8	2	2	£76.50
30-2-	43	15.5	35.5	5	19	16	11.2	48	2	2	£39.92
27-25-	43	24.8	35.6	3.8	25	25	14.1	60	2	2	£46.21
6-26-	45.8	18	35.8	7	45.8					0	Please Call
6-1-1	54.5	17.4	35.8	7.3	30					0	Please Call
17-10-	45	19.8	35.9	6.8	17.5	20	12.1	49.6	2	2	£39.30
4-3-21	45	21.8	36	6.3	35	22	16.02	45.5	1	1	£16.86
12-1-10	40	19.5	36	8.5	14	20	12.1	45	2	2	£39.17
40-2-4	43.6	19.7	36	8.4	25.2	20	14.1	67.1/67.3	2	2	£40.49
44-4-11	48	19	36	8.5	22	20	12.2	60	2	2	£47.64
7-2-4	43	21.8	36.4	16	19.25	22.2	12.2	72	2	2	£59.50
41-8-	45	24.8	36.4	7	14.5	25	14.1	44	2	2	£45.19
1-4-16	48	19.5	36.5	13.5	8	20	12.1	43	1	1	£16.25
40-2-7	44	19.7	36.6	6.75	23.75	20	12.1	61	2	2	£41.96
45-1-	42.9	19.5	36.9	6.2	28.8	20	12.2	36.7	4	4	£125.19
41-4-	46	19.7	37	7.5	17	20	12.1	50	2	2	£40.56
7-2-2	44	25.8	37.1	5.75	18.5	25	17.5	50	2	2	£50.32
36-1-1	48	19.7	37.3	8	20	20	12.1	57	2	2	£57.22
12-2-	54	24.3	37.4	24.8	12.7				4	0	£23.34
11-6-	47	19.5	38	4	19.9	20	16.1	50	1	1	£16.40
40-1-18	53	24.5	38	12	19	25	14.1	64.6	2	2	£53.67
40-3-12	46	24.5	38	6	19.5	27.5	16.1	67		0	Please Call
40-17-	44	19.8	38.1	3	21.8	20	12.8	50.8	2	2	£40.06
1-19-	49	19.25	38.2	3	37.55	20	14.4	83	2	2	£25.54
1-3-2	44	25	38.2	7.5	24.5	25.4	14.1	50	2	2	£61.95
6-22-	43.8	19.7	38.2	9.5	34.5					0	Please Call
8-3-	47.25	25	38.2	5	28.1	25.4	19.1	67	1	1	£18.67
27-20-	45	24.7	38.2	3.8	25	25	14.1	60	2	2	£47.51
41-7-	46	23.8	38.3	9.4	15	24	14.1	50.8	2	2	£46.92
25-5-	49.3	16.4	38.5	5.3	25.7				2	0	£22.59
1-8-	53.8	26	38.7	27.3	12.7				2	0	£25.96
44-4-16	54	19.7	38.8	9	33.5				2	2	£45.04
44-5-25	50	18.55	39.5	12.55	28.95	19.05	12.1	85.1	4	4	£105.00
49-4-	52	19.6	39.75	5	30	20	14.1	71	2	2	£45.11
39-2-	47	17.3	39.9	6.9	30.8					0	Please Call
1-24-16	45.5	20.7	40	4.9	15.2	22.2	12.1	40	2	2	£20.52
4-1-25	55	23.5	40	4.5	39.5	24	16.1	88	1	1	£26.76
4-2-4	50	19.7	40	5.5	36	20	16.2	83	1	1	£27.99



Top Hat Bushes & Tubes

Top Hat Dimensions (Dim C - Smallest to Largest)



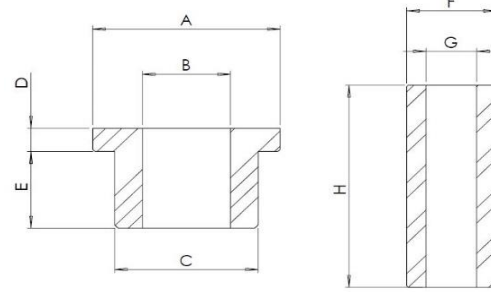
Tube Dimensions

Part No	A Flange O/D	B Bore I/D	C Barrel O/D	D Flange Thickness	E Barrel Length	F Tube O/D	G Tube Bore	H Tube Length	No. of Top Hats in Partset	No. of Tubes in Partset	Retail Price per Partset
7-2-	50	18	40	8	36					0	Please Call
22-2-	47.5	19.5	40	7	25	20	12	65	2	2	£23.62
27-22-	46	19.8	40	5	22	20	12.1	55	2	2	£38.45
40-3-18	50	27	40	8.5	24.5					0	Please Call
44-5-1	52.2	24.5	40	6.9	22.75	25	14.1	60	2	2	£46.62
44-5-2	52.2	24.5	40	5.6	22.75					0	Please Call
49-3-	50	19.5	40	3.5	16	20	14.1	39	2	2	£25.95
4-3-3	55	24.5	40.1	5.2	33.3	25	16.1	80	1	1	£19.49
4-3-4	55	24.5	40.1	5.2	33.3	25	16.1	98	1	1	£19.49
7-1-24	48	19.8	40.2	7.25	19.5	20	12.1	55	2	2	£40.75
6-24-	48	23	40.5	7.5	37.1					0	Please Call
24-7-	53	19.8	40.5	10.7	12.9	20	14.1	48	2	2	£44.25
40-6-	52	13.8	40.5	7.25	24	14	10.1	66	2	2	£40.21
40-19-	52	13.8	40.5	6.75	29	14	10.1	74	2	2	£47.13
44-2-2	54.5	19.5	40.5	15.9	39.8	20	14.1	45	2	2	£45.57
44-3-26	50	24.5	40.6	5	29	25	14.1	60	2	2	£59.05
44-2-7	59	17.5	40.8	10.5	42.8	18	10.1	53.8	2	2	£47.97
7-25-	50	25.2	40.9	5.5	18.5	25.4	16.1	50	2	2	£45.50
31-1-24	52.9	19.5	40.9	13.5	34	20	12.1	50	2	2	£38.69
24-12-	53	19.8	41	5	17.2	20	14.1	45	2	2	£44.16
42-1-	50	19.4	41.1	7.5	23	22.2	12.1	62.5	2	2	£52.85
1-17-	51.3	24.4	41.3	7	19	25	19.1	54	2	2	£31.44
4-1-17	50	25.2	41.4	3.6	31	25.4	14.1	76	1	1	£21.59
36-1-11	49	24.5	41.8	2.75	16.5	25	12.1	39.6	1	4	£53.54
4-2-20	55	19.5	42	6.5	46	20	16.1	106	1	1	£15.44
44-4-13	52	19.7	42	6.75	30.75	20	14.1	75	2	2	£55.29
44-6-24	48	24.9	42.1	5.91	16.59	25.4	12.1	46	4	4	£82.90
4-23-	52.5	31.8	42.3	7.6	19	32	20.1	53	1	1	£22.35
41-5-	54	19.8	42.3	12.1	42.8	20	12.1	57	4	4	£76.11
41-6-	54	19.8	42.35	14.5	16.5	20	12.1	63	2	2	£53.19
41-1-7	52.5	19.5	42.5	8.3	15.1	20	12.1	47.7	2	2	£57.15
8-4-	51.75	27.5	43	3	28.1	28	22.3	63.6	1	1	£18.77
31-1-18	55	19.5	43	9.4	47.8	20	14.1	60	2	2	£45.59
39-20-	50	19.5	43	6.8	21.2	20	14.2	58.8	1	1	£16.89
41-1-5	51	19.5	43	11	20	20	14.1	64	2	2	£75.44
44-4-10	52	19.7	43	6.75	30.75	20	12.1	75	2	2	£54.44
34-11-	51	15.5	43.1	4.7	17.6	16	12.8	44.5	2	2	£32.02
12-4-	50.9	19.7	43.8	3.9	19.1	20.64	14.3	48	2	2	£21.32
41-1-8	53.9	19.5	43.9	5	40	20	12.1	46	2	2	£56.98
41-1-14	53.9	19.5	43.9	5	40	20	14.1	46	2	2	£56.98
7-24-	54	19.5	44	8.65	15	20	12.1	48.3	2	2	£30.87



Top Hat Bushes & Tubes

Top Hat Dimensions (Dim C - Smallest to Largest)



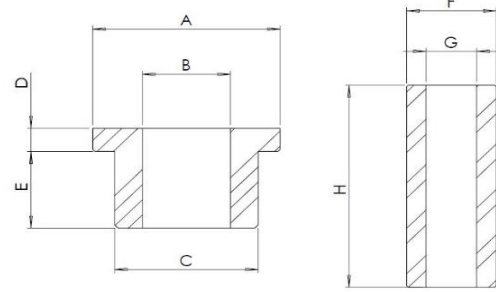
Tube Dimensions

Part No	A Flange O/D	B Bore I/D	C Barrel O/D	D Flange Thickness	E Barrel Length	F Tube O/D	G Tube Bore	H Tube Length	No. of Top Hats in Partset	No. of Tubes in Partset	Retail Price per Partset
4-13-	54	20.4	44.2	7	29.5	20.64	14.1	74	1	1	£23.20
24-10-	49.5	19.8	44.3	9.8	15.7	20	12.1	50	2	2	£46.18
6-19-	50	22	44.4	5	24					1	Please Call
12-5-	51	33.6	44.4	4.05	19.2	34	26.1	48	2	2	£20.77
24-11-	53	19.8	44.5	7	17.4	20	12.1	50	2	2	£45.78
30-1-	51	17.6	44.5	6.5	19	19.05	11.2	50.8	4	4	£79.84
4-1-1	51	25.2	44.7	5	33.5	25.4	16.1	80	1	1	£19.07
4-1-2	60	25.2	44.7	5	33.5	25.4	12.1	80	1	1	£23.30
4-1-3	65	27.8	44.7	5	37	28	19	90	1	1	£31.17
4-1-5	65	31.7	44.7	5	33	31.75	22.05	80	1	1	£24.71
4-2-13	60	24.5	44.7	6.75	19.75	25	16.2	55	1	1	£25.35
4-20-	55	19.7	44.9	5	19.9	20	12.1	56		1	Please Call
4-26-	55	31.6	44.9	4.6	22				1	0	£15.73
2-1-2	55	21.7	45	7	40	22	12.1	100	1	1	£16.40
4-18-	51.25	25.1	45	5	30	25.4	16.1	72		1	Please Call
4-3-1	59.5	24.5	45	7.5	19.75	25	16.2	55	1	1	£19.68
44-1-22	65	21.5	45	33	58.6	22	12.1	90	2	2	£66.23
2-1-1	55	25.1	45.1	7.5	30	25.4	14.1	76	1	1	£18.01
2-25-	51	25.1	45.1	5	33.5	25.4	16.1	80	1	1	£20.52
8-16-	55	33.8	45.1	2.75	38	34	24.1	85	1	1	£37.44
4-24-	65	21.8	45.2	5	37	22.2	16.1	87	1	1	£25.23
4-25-	65	21.8	45.2	5	29	22.2	16.1	70	1	1	£23.68
4-1-26	54	28.8	45.2	4	24.7				1	0	£39.07
4-2-16	54	27.8	45.2	4	22.5					0	Please Call
4-12-	51.25	23.8	45.3	5	29.75	24	16	70	1	1	£38.22
1-2-10	61	34.7	45.5	10	38	34.92	14.1	53	4	4	£69.78
44-3-	55.8	19.5	45.8	6.5	26.5	20	12.1	54	2	2	£50.36
52-1-	48.9	34.7	45.9	8.1	18.55	35	16.1	54.3	2	2	£37.33
4-1-23	65	24.5	46	9	34.5	25	16.1	87	1	1	£34.88
12-1-4	52	16.5	46	7	17	17	12.1	49.8	2	2	£54.68
44-6-22	60	23.5	46.1	5.8	23.6	24	12.1	59.8	4	4	£127.48
2-1-3	55	25.2	46.3	9.1	29.25	25.4	12.1	80	1	1	£17.57
1-3-1	52	29.5	46.9	5	14.5	30	16.3	40	2	2	£41.78
1-2-13	61	23.8	47	10.5	69.5	24	16.1	81	2	2	£42.52
4-16-	57.25	25.1	47.4	3.5	39.65	25	16.1	87	1	1	£18.05
31-1-21	59.8	21.5	47.8	7	43.5	20	14.1	53	2	2	£46.10
20-10-	62.25	31.3	47.9	7.9	17.4	31.8	25.4	50.8	1	1	£17.68
40-5-	58	18.8	47.9	7.8	24.5	19.05	11.2	66	2	2	£40.21
40-18-	58	18.8	47.9	3	29.5	19.05	11.2	74	2	2	£40.21
7-1-7	56	29.8	48.4	6.75	32.3	30	18.1	84	2	2	£64.26
7-1-17	56	29.8	48.4	9.25	32.3					0	Please Call



Top Hat Bushes & Tubes

Top Hat Dimensions (Dim C - Smallest to Largest)



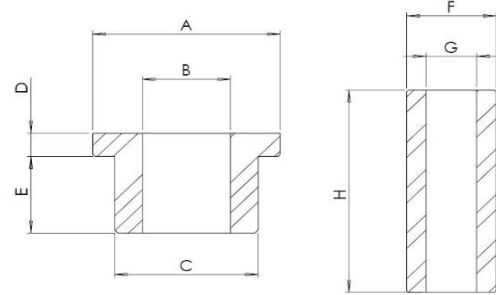
Tube Dimensions

Part No	A Flange O/D	B Bore I/D	C Barrel O/D	D Flange Thickness	E Barrel Length	F Tube O/D	G Tube Bore	H Tube Length	No. of Top Hats in Partset	No. of Tubes in Partset	Retail Price per Partset
4-2-5	60	29.7	48.7	4	37	30	16.3	82	1	1	£17.64
1-3-6	55	24.2	49	5.1	28.3	25	14.1	68	2	2	£69.66
40-2-24	62	19.7	49.3	7.6	29.9	20	14.1	75	2	2	£61.47
4-1-20	63	34.5	49.6	2.5	27	35	14.1	61	1	1	£64.37
4-3-2	65	24.5	49.7	5.2	33.3	25	16.1	80	1	1	£19.49
3-24-14	55	15.7	49.8	5.4	18.9	16	11.2	50	4	4	£54.55
4-1-16	58	34.8	50	5.75	23.6	35	14.1	61	1	1	£64.10
12-3-	58	20	50	5.75	23	20.64	14.1	60	8	8	£107.68
12-1-12	58	20	50	5.75	16	20.64	12.1	43.5		2	Please Call
40-2-23	65	24.7	50	4	30	25	14.1	68	2	2	£47.66
40-3-20	64	24.7	50	6.6	28.6	25	14.1	72.4	2	1	£35.02
44-7-2	65	29.5	50	10.5	16.25	30	16.1	55.5	4	4	£118.24
44-7-3	65	29.5	50	12.5	16.25	30	16.1	55.5	4	4	£118.24
7-1-23	57	29.8	50.2	13.75	12.5	30	22.4	54.1	2	2	£57.86
41-2-	59	25.2	50.3	10.2	46.3	25	14.1	63	2	2	£61.71
4-1-24	66	24.5	50.4	8.5	18.5	25	16.2	55	1	1	£25.38
1--	63	21	50.8	4	18.5	22.23	16	47.8	4	4	£61.48
1-2-	63	18.8	50.8	4	21.5	20	16	54	4	4	£61.48
31-1-25	62.8	19.5	50.8	10.7	39.8	20	12.1	53	2	2	£40.40
40-2-25	62	19.7	50.8	7.6	29.9	20	14.1	75	2	2	£61.47
1-2-26	58	26.5	51	6.5	20.5	27	16.2	55	2	2	£77.69
42-17-	61	36	51	6.5	46.5				4	0	£63.95
22-6-	62	19.6	51.6	9.5	20	20	12.2	60	8	1	£144.03
22-7-	62	19.6	51.6	7.4	24.5	20	12	65	4	4	£88.23
7-2-3	65	27.8	52.1	9	17	28	18.1	53	2	2	£45.82
36-18-	60	30.1	52.9	7	19.5	30	20.5	54.1	2	2	£70.30
1-3-8	58	24.5	53	6.6	29.5	25	14.1	73.4	2	2	£50.10
24-17-	63	19.5	53	4.5	17.5	20	12.1	54	2	2	£54.81
1-2-7	66	34.7	53.4	9.25	64	34.92	16.1	77	2	2	£44.18
6-18-	60	25	54	5	32	25	14.1	76		1	Please Call
6-20-	60	25	54	5	24	25	14.1	58		1	Please Call
36-1-5	65	19.8	54.5	7.25	19.5	20	12.1	55	2	2	£62.13
42-2-	65	37.6	54.9	3	17.6	38	14.1	43	2	2	£55.65
1-2-16	64	31.8	55	5.5	31	30	16.1	75.5	2	2	£59.99
1-3-10	60	24.5	55.2	9	27	25	14.1	73.4	2	2	£50.92
31-1-22	68.5	19.5	56.5	11.5	57	20	14.1	71	2	2	£55.71
7-2-1	78	20.8	56.8	15	15	20	14.1	60	2	2	£61.18
44-1-23	71	19.5	57	39.3	51.7	20	12.1	90	2	2	£71.13
40-2-22	70	24.8	57.5	5.5	30.5	25.4	16.1	72	2	2	£54.21
44-2-8	67	22.5	59	10	48	23	10.1	58	2	2	£61.82
40-3-1	70	19.7	59.4	9.9	27.6	20	16.1	75	2	2	£56.59



Top Hat Bushes & Tubes

Top Hat Dimensions (Dim C - Smallest to Largest)



Tube Dimensions

Part No	A Flange O/D	B Bore I/D	C Barrel O/D	D Flange Thickness	E Barrel Length	F Tube O/D	G Tube Bore	H Tube Length	No. of Top Hats in Partset	No. of Tubes in Partset	Retail Price per Partset
12-1-	70	19.3	59.7	4.2	23.9	20	16.1	50	4	4	£50.78
27-1-25	72	19.5	60	9.9	39.4				2	2	£46.08
44-5-3	70	29.5	60	10	54	30	14.1	64	2	2	£43.12
7-1-21	67	29.8	60.2	11.25	15	30	22.4	54.1	2	2	£67.13
1-24-5	70	21.5	60.5	16.7	29.9	20	16	93.5	2	2	£54.00
1-4-5	75.5	19.4	60.5	19	26.5	20	16.1	93	8	2	£45.43
44-5-5	72	34.5	61	7.4	30.5	35	14.1	75	2	2	£55.64
44-5-6	72	34.5	61	4.5	30.5					0	Please Call
40-2-10	80	19.7	63.4	9.5	25.5	20	12.1	70	2	2	£55.70
4-2-14	82	23.5	63.5	9	34.5	24	16.1	88	1	1	£32.89
1-1-2	75.6	24.5	65.6	7.5	26.7	25	16.1	70	4	4	£63.68
4-3-7	76	49.5	66	12.9	37.6	50	16.1	102	1	1	£80.31
4-3-23	100	40	66	10	85					0	Please Call
34-19-	91.75	57.5	67.5	6.9	5.8				4	0	£31.53
40-3-22	90	24.7	69.1	11.74	28.41					0	Please Call
40-4-4	90	24.7	69.1	7.84	32.41					0	Please Call
44-6-7	86	29.8	70	26.3	93.8	30	12.1	93.8	2	2	£56.38
1-1-4	79.6	24.5	70.6	9.2	24.5	25	16.1	70	4	4	£65.69
1-2-8	91	34.7	72	14	66	34.92	16.1	83	2	2	£57.17
44-6-5	89	29.5	72	24.8	93.8	30	12.1	93.8		2	Please Call
4-4-1	85	24.8	75.5	5	17.2					0	Please Call
36-1-7	85	27.6	80.5	8.5	32	28	14.1	83	4	4	£219.44
52-2-	98	39.5	80.9	15.2	64.8	40	16.1	80		2	Please Call