



FITTING INSTRUCTIONS

24U - Front Wishbone Rear Bush

24U Contains:

2 x Polyurethane Pieces

2 x 24U Inner Tubes

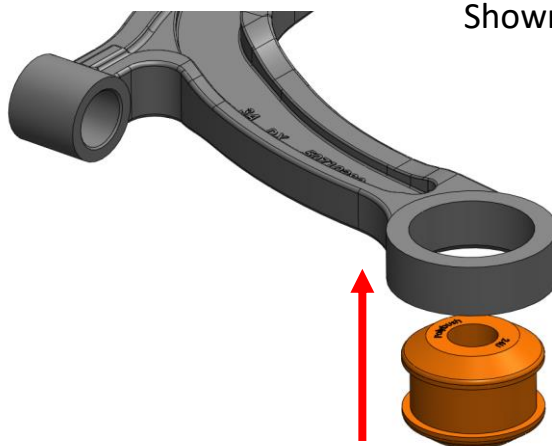
RH Wishbone
Shown

Step 1:

Remove the existing bushes.

Step 2: **IMPORTANT**

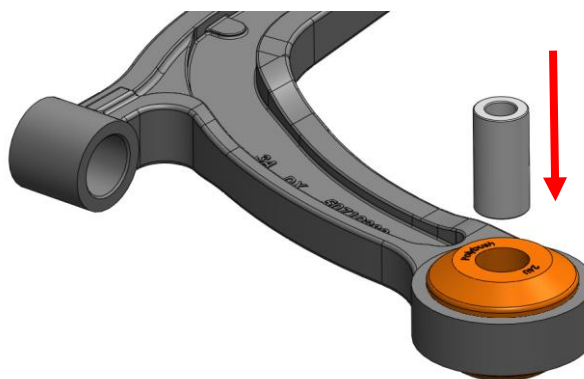
Using a file or emery paper, remove any sharp edges from the bore on both edges. Failure to do so can lead to damage of the bush.



Step 3:

Apply washing-up liquid or similar to one of the bushes edges.

NOTE: This bush is symmetrical and can be fitted either way around.



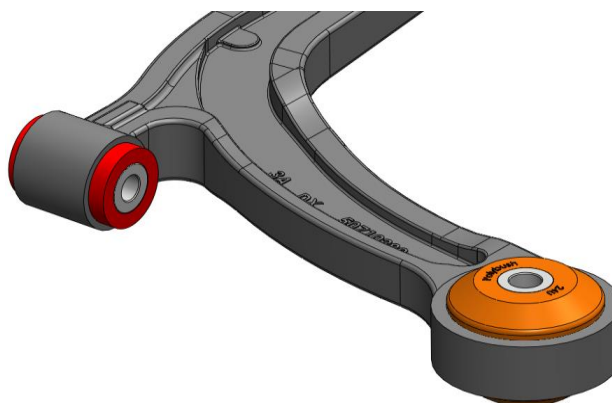
Step 4:

Press in the bush in from the bottom side of the wishbone until fully seated.

NOTE: The bottom side of the wishbone has a leading chamfer to ease fitment.

Step 5:

Insert the inner tube from either direction until flush either side of the bush.



Step 6:

Refit wishbone to the vehicle and torque to manufacturers settings.

If you have any questions regarding the fitment of these bushes, please give us a ring on 01978 664316 or send an e-mail to sales@polybush.co.uk.