

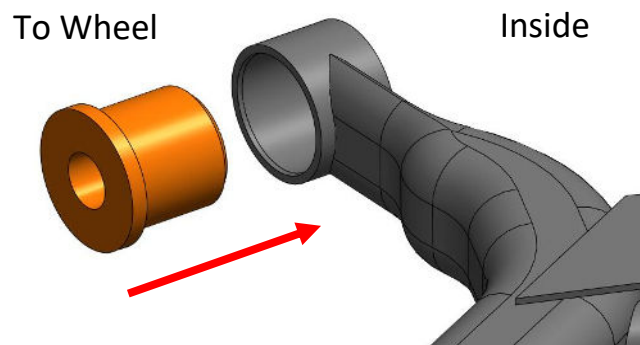

**FITTING INSTRUCTIONS**
**24W - Rear Axle Bush**
**24W Contains:**

2 x Polyurethane Pieces  
2 x 24W Inner Tubes

**Step 1:**  
Remove the mounting brackets & existing bushes.

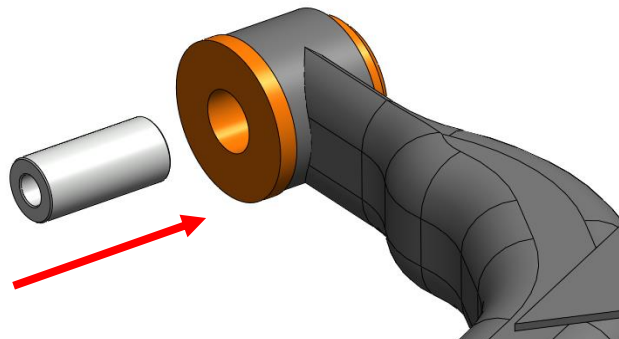
LH Side  
Shown

**Step 2:**  
Ensure the bore is clean and free from debris.



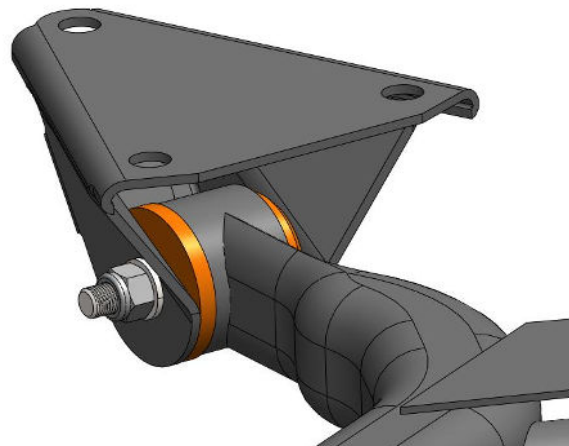
**Step 3:**  
Fit the 24W with the flange to the outside of the vehicle.

**Step 4:**  
Insert the inner tube until flush either side of the bush.



**Step 5:**  
Refit the bracket over the bush.

**Step 6:**  
Refit bracket and torque to manufacturers settings when the vehicle is at ride height.



If you have any questions regarding the fitment of these bushes, please give us a ring on 01978 664316 or send an e-mail to [sales@polybush.co.uk](mailto:sales@polybush.co.uk).