



FITTING INSTRUCTIONS

41BB - Front Lower Control Arm Inner Bush

Step 1:

This OEM bush has 2 different Outer Dimensions meaning it **can only be pushed out one way**. Ensure you measure the 2 diameters to find the smaller Diameter as this will be the pushing face.

Step 2:

Using the provided removal/installation tool, press out the OE bush with the larger hole towards the floor. **NOTE: Ensure the removal tool is seated before applying large pressure as this may damage the arm.**

Step 3:

With the installation tool still in place, flip the arm around so the smaller hole is towards the floor. Drop in the Outer tube (smaller end 1st) and press the tube in until flush with either side. **NOTE: The tube should fall in approx 70% of the way without applying force. If it doesn't it is the wrong way around.**

Step 4:

Insert a bush from either side & insert inner tube until flush with either end of the bushes.

Step 5:

Remove the Installation tool.

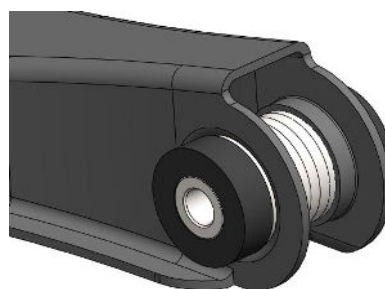
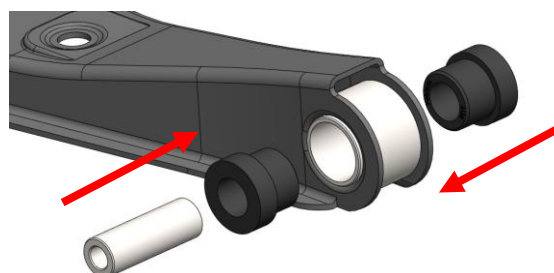
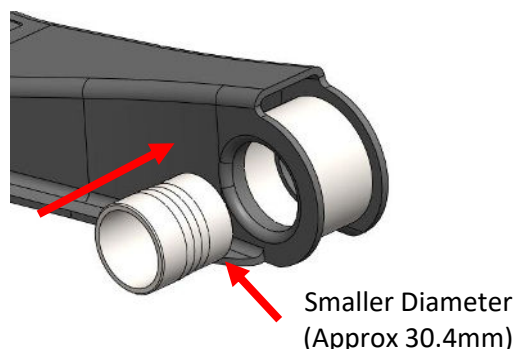
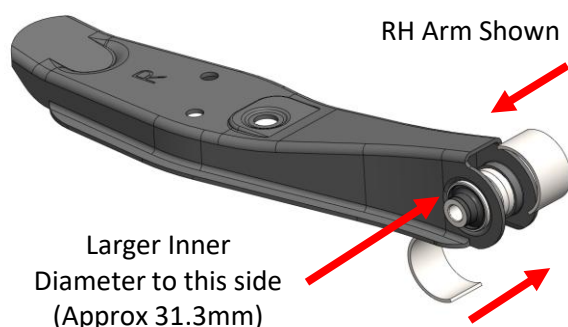
Step 6:

Refit the arm to the bracketry and tighten to OE torque specifications at ride height.

NOTE: Ensure suspension is settled.

41BB Contains:

- 4 x Polyurethane Pieces
- 2 x Inner Tubes
- 2 x Outer Tubes
- 2 x Installation/Removal Tools



If you have any questions regarding the fitment of these bushes, please give us a ring on 01978 664316 or send us an e-mail - sales@polybush.co.uk.